



SELECTION GUIDE

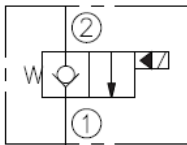


SOLENOID VALVES

Poppet, 2-Way, Normally Closed

Flow	Model	Cat. Pg.
23 lpm/6 gpm	SV08-20	1.010.1
23 lpm/6 gpm	SV08-20J	1.011.1
19 lpm/5 gpm	*SF08-20	1.012.1
45 lpm/12 gpm	SV10-20	1.016.1
114 lpm/30 gpm	SV12-20	1.018.1
132 lpm/35 gpm	SV16-20	1.020.1
76 lpm/20 gpm	*HSV10-20	1.017.1

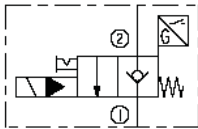
*Rated for 345 bar/5000 psi



Poppet, 2-Way, Normally Closed with Neutral Sensor

Flow	Model	Cat. Pg.
19 lpm/5 gpm	*SV58-P20A	1.025.1

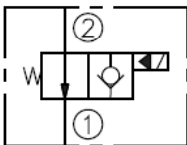
*Rated for 345 bar/5000 psi



Poppet, 2-Way, Normally Open

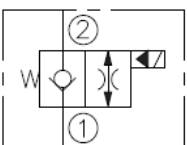
Flow	Model	Cat. Pg.
30 lpm/8 gpm	SV08-21	1.030.1
30 lpm/8 gpm	*SF08-21	1.031.1
68 lpm/18 gpm	SV10-21	1.032.1
114 lpm/30 gpm	SV12-21	1.035.1
132 lpm/35 gpm	SV16-21	1.037.1
76 lpm/20 gpm	*HSV10-21	1.033.1

*Rated for 345 bar/5000 psi



Poppet, 2-Way, Normally Closed with Reverse Flow Energized

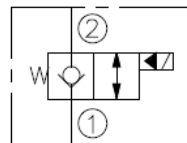
Flow	Model	Cat. Pg.
1.5 lpm/0.4 gpm	SL08-22	1.040.1



Poppet, 2-Way, Normally Closed with Reverse Flow Energized

Flow	Model	Cat. Pg.
23 lpm/6 gpm	SV08-22	1.041.1
23 lpm/6 gpm	*SF08-22	1.042.1
45 lpm/12 gpm	SV10-22	1.044.1
114 lpm/30 gpm	SV12-22	1.045.1
132 lpm/35 gpm	SV16-22	1.046.1
303 lpm/80 gpm	*SF20-22	1.047.1
76 lpm/20 gpm	*HSV10-22	1.043.1

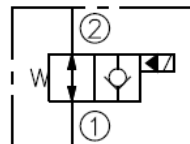
*Rated for 345 bar/5000 psi



Poppet, 2-Way, Normally Open with Reverse Flow De-Energized

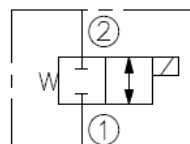
Flow	Model	Cat. Pg.
30 lpm/8 gpm	SV08-23	1.050.1
30 lpm/8 gpm	*SF08-23	1.051.1
57 lpm/15 gpm	SV10-23	1.053.1
114 lpm/30 gpm	SV12-23	1.054.1
132 lpm/35 gpm	SV16-23	1.055.1
303 lpm/80 gpm	*SF20-23	1.056.1
76 lpm/20 gpm	*HSV10-23	1.053.1

*Rated for 345 bar/5000 psi



Spool, 2-Way, Normally Closed

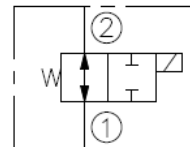
Flow	Model	Cat. Pg.
17 lpm/4.5 gpm	SV08-24	1.060.1
38 lpm/10 gpm	SV10-24	1.064.1
76 lpm/20 gpm	SV12-24	1.065.1



Spool, 2-Way, Normally Open

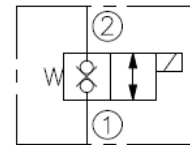
Flow	Model	Cat. Pg.
9 lpm/2.5 gpm	SV08-25	1.070.1
22 lpm/6 gpm	SV10-25	1.076.1
76 lpm/20 gpm	SV12-25	1.078.1
30 lpm/8 gpm	*HSV10-25	1.077.1

*Rated for 345 bar/5000 psi



Blocking/Low Flow, 2-Way, Normally Closed

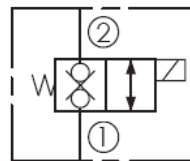
Flow	Model	Cat. Pg.
1 lpm/0.26 gpm	SV08-26	1.080.1
2 lpm/0.53 gpm	SV38-26	1.081.1



Blocking/Poppet, 2-Way, Normally Closed

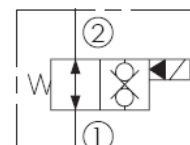
Flow	Model	Cat. Pg.
11 lpm/3 gpm	SV08-28	1.089.1
19 lpm/5 gpm	SV38-28	1.090.1
76 lpm/20 gpm	SV10-28	1.092.1
113 lpm/30 gpm	SV12-28	1.094.1
303 lpm/80 gpm	SV20-28	1.096.1
76 lpm/20 gpm	*HSV10-28	1.093.1

*Rated for 345 bar/5000 psi



Blocking/Poppet, 2-Way, Normally Open

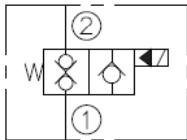
Flow	Model	Cat. Pg.
76 lpm/20 gpm	SV10-29	1.098.1
113 lpm/30 gpm	SV12-29	1.099.1
76 lpm/20 gpm	*HSV10-29	1.098.3



SOLENOID VALVES

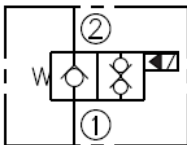
Blocking/Poppet, 2-Way, Normally Closed, with Outlet Check

Flow	Model	Cat. Pg.
23 lpm/6 gpm	SVCV08-20	1.115.1
114 lpm/30 gpm	SVC12-20	1.117.1



Blocking/Poppet, 2-Way, Normally Open, with Outlet Check

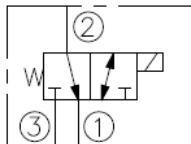
Flow	Model	Cat. Pg.
23 lpm/6 gpm	SVCV08-21	1.125.1



Spool, 3-Way

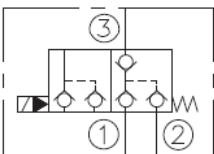
Flow	Model	Cat. Pg.
15 lpm/4 gpm	SV08-30	1.300.1
18 lpm/5 gpm	SV38-30	1.301.1
15 lpm/4 gpm	*SV58-30	1.303.1

*Rated for 345 bar/5000 psi



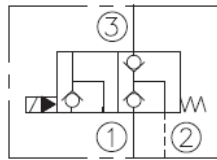
Blocking/Poppet, 3-Port with Load Sense, Normally Closed

Flow	Model	Cat. Pg.
57 lpm/15 gpm	SVCL10-30	1.310.1



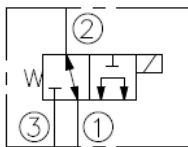
Poppet, 3-Port Normally Closed

Flow	Model	Cat. Pg.
57 lpm/15 gpm	SVCL10-32	1.315.1



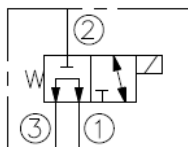
Spool, 3-Way

Flow	Model	Cat. Pg.
6 lpm/1.6 gpm	SV07-31	1.350.1
11 lpm/3 gpm	SV08-31	1.360.1
11 lpm/3 gpm	SV38-31J	1.361.1
22 lpm/6 gpm	SV10-31	1.368.1
60 lpm/16 gpm	SV12-31	1.369.1



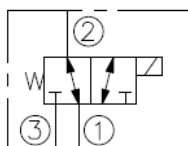
Spool, 3-Way

Flow	Model	Cat. Pg.
11 lpm/3 gpm	SV08-33	1.370.1
19 lpm/5 gpm	SV10-33	1.372.1
60 lpm/16 gpm	SV12-33	1.374.1



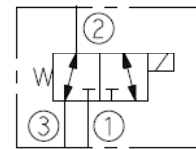
Spool, 3-Way

Flow	Model	Cat. Pg.
13 lpm/3.5 gpm	SV07-34	1.376.1
23 lpm/6 gpm	SV10-34	1.380.1
60 lpm/16 gpm	SV12-34	1.382.1



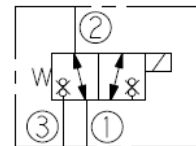
Spool, 3-Way

Flow	Model	Cat. Pg.
11 lpm/3 gpm	SV07-35	1.386.1
11 lpm/3 gpm	SV08-35	1.387.1



Spool, 3-Way, 2-Position

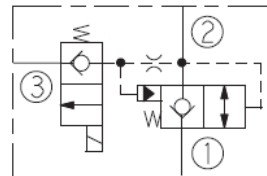
Flow	Model	Cat. Pg.
11 lpm/3 gpm	SV38-38	1.390.1



Blocking/Poppet, 3-Port, Normally Closed

Flow	Model	Cat. Pg.
378 lpm/100 gpm	SV20-S38	1.392.1

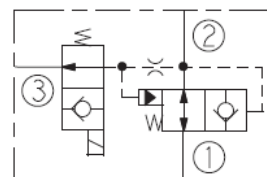
*Rated for 293 bar/4250 psi



Blocking/Poppet, 3-Port, Normally Open

Flow	Model	Cat. Pg.
378 lpm/100 gpm	SV20-S39	1.394.1

*Rated for 293 bar/4250 psi



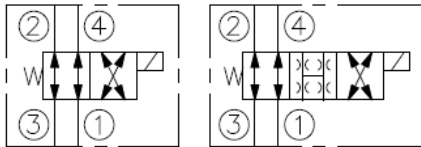
SOLENOID VALVES

Spool, 4-Way, 2-Position

Flow	Model	Cat. Pg.
11 lpm/3 gpm	SV08-40	1.400.1
22 lpm/6 gpm	SV10-40	1.407.1
11 lpm/3 gpm	*SV58-40	1.402.1

*Rated for 345 bar/5000 psi

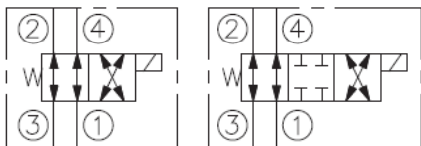
TRANSITION:



Spool, 4-Way, 2-Position Ports Closed at Crossover

Flow	Model	Cat. Pg.
38 lpm/10 gpm	SV10-40A	1.409.1

TRANSITION:

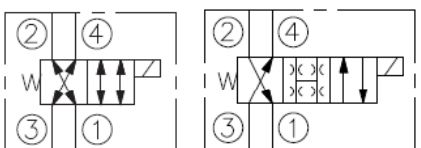


Spool, 4-Way, 2-Position HyPerformance™ High Pressure

Flow	Model	Cat. Pg.
23 lpm/6 gpm	*HSV10-40R	1.408.1

*Rated for 345 bar/5000 psi

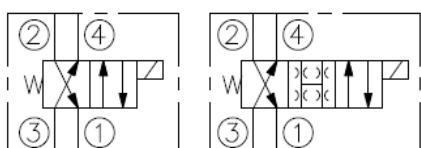
TRANSITION:



Spool, 4-Way, 2-Position

Flow	Model	Cat. Pg.
60 lpm/16 gpm	SV12-40R	1.410.1

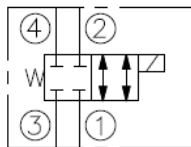
TRANSITION:



Spool, 4-Way, 2-Position

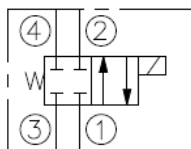
Flow	Model	Cat. Pg.
11 lpm/3 gpm	SV08-41	1.420.1
22 lpm/6 gpm	SV10-41	1.422.1
30 lpm/8 gpm	*SV58-41	1.421.1

*Rated for 345 bar/5000 psi



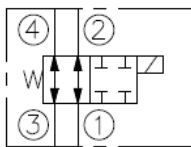
Spool, 4-Way, 2-Position

Flow	Model	Cat. Pg.
60 lpm/16 gpm	SV12-41	1.424.1



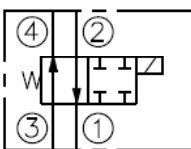
Spool, 4-Way, 2-Position

Flow	Model	Cat. Pg.
11 lpm/3 gpm	SV08-42	1.430.1
22 lpm/6 gpm	SV10-42	1.432.1



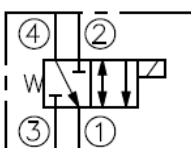
Spool, 4-Way, 2-Position

Flow	Model	Cat. Pg.
60 lpm/16 gpm	SV12-42	1.434.1



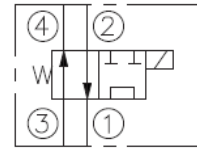
Spool, 4-Way, 2-Position

Flow	Model	Cat. Pg.
11 lpm/3 gpm	SV08-43	1.440.1
22 lpm/6 gpm	SV10-43	1.442.1



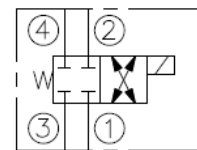
Spool, 4-Way, 2-Position

Flow	Model	Cat. Pg.
11 lpm/3 gpm	SV08-44	1.450.1
22 lpm/6 gpm	SV10-44	1.452.1



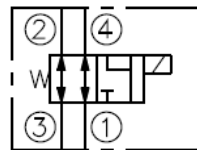
Spool, 4-Way, 2-Position

Flow	Model	Cat. Pg.
11 lpm/3 gpm	SV08-45	1.460.1



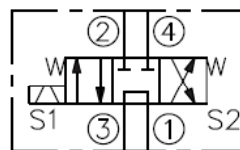
Spool, 4-Way, 2-Position

Flow	Model	Cat. Pg.
11 lpm/3 gpm	SV08-46	1.470.1



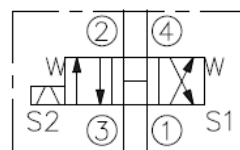
Spool, 4-Way, 3-Position, Tandem Center

Flow	Model	Cat. Pg.
11 lpm/3 gpm	SV08-47A	1.500.1
14 lpm/4 gpm	SV10-47A	1.502.1



Spool, 4-Way, 3-Position, Open Center

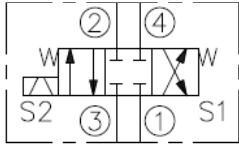
Flow	Model	Cat. Pg.
11 lpm/3 gpm	SV08-47B	1.508.1
22 lpm/6 gpm	SV10-47B	1.510.1



SOLENOID VALVES

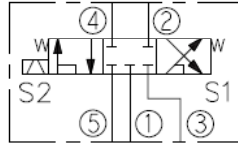
Spool, 4-Way, 3-Position, Closed Center

Flow	Model	Cat. Pg.
11 lpm/3 gpm	SV08-47C	1.520.1
22 lpm/6 gpm	SV10-47C	1.522.1



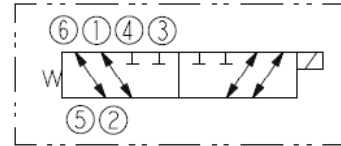
Spool, 5-Way, 3-Position, with Load Sense Port

Flow	Model	Cat. Pg.
15 lpm/4 gpm	SV10-57C	1.580.1



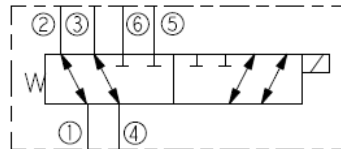
Spool, 6-Way, 2-Position

Flow	Model	Cat. Pg.
45 lpm/12 gpm	SV12-60	1.620.1



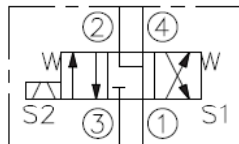
Spool, 6-Way, 2-Position for Selector or Series/Parallel Drive Circuits

Flow	Model	Cat. Pg.
7.6 lpm/2 gpm	SV80-61	1.640.1



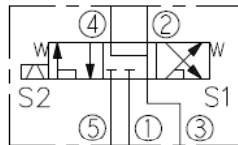
Spool, 4-Way, 3-Position, "Motor" Spool

Flow	Model	Cat. Pg.
11 lpm/3 gpm	SV08-47D	1.530.1
22 lpm/6 gpm	SV10-47D	1.532.1



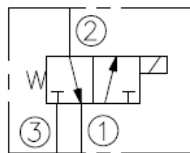
Spool, 5-Way, 3-Position, with Load Sense Port

Flow	Model	Cat. Pg.
15 lpm/4 gpm	SV10-57D	1.581.1



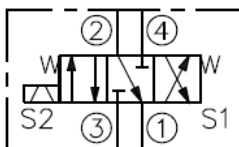
Spool, 3-Way, 2-Position, Drop-In Style

Flow	Model	Cat. Pg.
30 lpm/8 gpm	SV98-T39	1.700.1



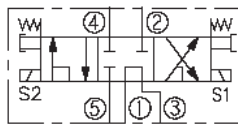
Spool, 4-Way, 3-Position

Flow	Model	Cat. Pg.
11 lpm/3 gpm	SV08-47E	1.540.1
30 lpm/8 gpm	SV10-47E	1.542.1



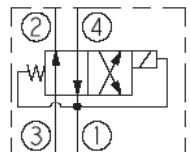
Spool, 5-Way, 3-Position, with Load Sense Port

Flow	Model	Cat. Pg.
13 lpm/3 gpm	SV08-58C	1.583.1
30 lpm/8 gpm	SV10-58C	1.584.1



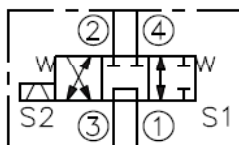
Spool, 4-Way, 2-Position, Drop-In Style

Flow	Model	Cat. Pg.
30 lpm/8 gpm	SV98-T40	1.704.1



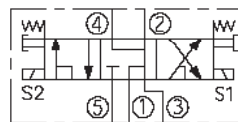
Spool, 4-Way, 3-Position, Modified Tandem Center

Flow	Model	Cat. Pg.
15 lpm/4 gpm	SV10-47F	1.552.1



Spool, 5-Way, 3-Position, with Load Sense Port

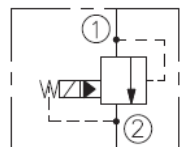
Flow	Model	Cat. Pg.
13 lpm/3 gpm	SV08-58D	1.585.1
30 lpm/8 gpm	SV10-58D	1.586.1



Spool, 2-Way, Normally Open with Internal Relief

Flow	Model	Cat. Pg.
75 lpm/20 gpm	SVRV10-26	1.720.1
189 lpm/50 gpm	SVRV12-26F	1.720.1

Both models Rated for 297 bar/4300 psi

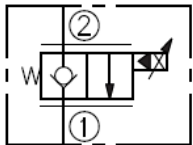


ELECTRO-PROPORTIONAL VALVES

Proportional Flow Control, 2-Way, Normally Closed

Flow	Model	Cat. Pg.
22 lpm/6 gpm	SP08-20	2.008.1
68 lpm/18 gpm	SP10-20	2.010.1
100 lpm/27 gpm	SP12-20	2.012.1
265 lpm/70 gpm	SP16-20	2.014.1
265 lpm/70 gpm	*HSP16-20	2.016.1

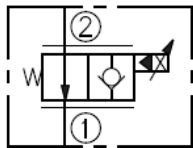
*Rated for 345 bar/5000 psi



Proportional Flow Control, 2-Way, Normally Open

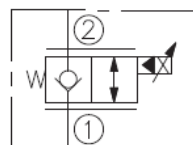
Flow	Model	Cat. Pg.
22 lpm/5.8 gpm	SP08-21	2.020.1
61 lpm/16 gpm	SP10-21	2.021.1
53 lpm/14 gpm	*HSP10-21	2.021.2
200 lpm/53 lpm	SP12-21	2.022.1
265 lpm/70 gpm	SP16-21	2.023.1

*Rated for 345 bar/5000 psi



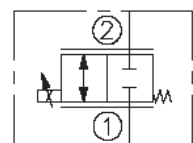
Proportional Flow Control, 2-Way, Normally Closed, Bi-Directional

Flow	Model	Cat. Pg.
30 lpm/8 gpm	SP08-22	2.024.1



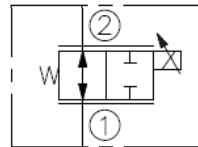
Proportional Flow Control, 2-Way, Normally Closed, Bi-Directional

Flow	Model	Cat. Pg.
11 lpm/3 gpm	SP08-24	2.026.1
26 lpm/7 gpm	SP10-24	2.027.1



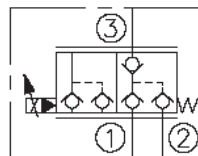
Proportional Flow Control, 2-Way, Normally Open, Bi-Directional

Flow	Model	Cat. Pg.
15 lpm/4 gpm	SP08-25	2.028.1
60.6 lpm/16 gpm	SP10-25	2.029.1



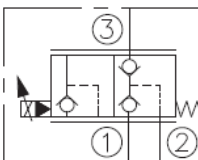
Proportional Directional, 3-Port, with Load Sense, Normally Closed

Flow	Model	Cat. Pg.
57 lpm/15 gpm	SPCL10-30	2.040.1
152 lpm/40 gpm	SPCL16-30	2.041.1



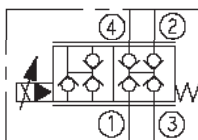
Proportional Directional, 3-Port, with Load Sense, Normally Closed

Flow	Model	Cat. Pg.
57 lpm/15 gpm	SPCL10-32	2.042.1
152 lpm/40 gpm	SPCL16-32	2.043.1



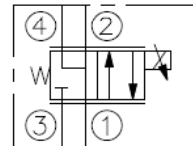
Proportional Directional, 3-Port, with Load Sense, Normally Closed

Flow	Model	Cat. Pg.
152 lpm/40 gpm	SPCL16-40	2.050.1



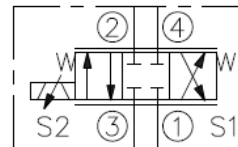
Proportional Directional, 4-Way, 2-Position

Flow	Model	Cat. Pg.
11 lpm/3 gpm	SP08-46R	2.088.1
23 lpm/6 gpm	SP10-46R	2.090.1



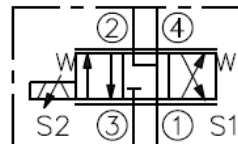
Proportional Directional, 4-Way, 3-Position, Closed Center

Flow	Model	Cat. Pg.
11 lpm/3 gpm	SP08-47C	2.110.1
7.6 lpm/2 gpm	SP08-47CL	2.111.1
22 lpm/6 gpm	SP10-47C	2.112.1



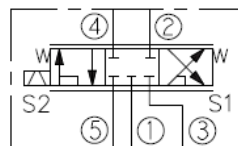
Proportional Directional, 4-Way, 3-Position, "Motor Spool"

Flow	Model	Cat. Pg.
11 lpm/3 gpm	SP08-47D	2.120.1
7.6 lpm/2 gpm	SP08-47DL	2.121.1
22 lpm/6 gpm	SP10-47D	2.122.1



Proportional Directional, 5-Way, 3-Position for Load Sensing

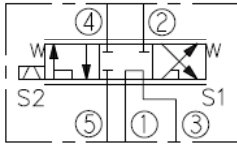
Flow	Model	Cat. Pg.
23 lpm/6 gpm	SP10-57C	2.132.1



ELECTRO-PROPORTIONAL VALVES

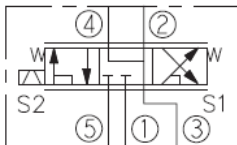
Proportional Directional, 5-Way, 3-Position for Brake Release

Flow	Model	Cat. Pg.
23 lpm/6 gpm	SP10-58C	2.142.1



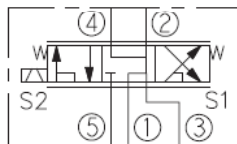
Proportional Directional, 5-Way, 3-Position with Load Sense

Flow	Model	Cat. Pg.
9.5 lpm/2.5 gpm	SP08-57D	2.134.1
23 lpm/6 gpm	SP10-57D	2.136.1



Proportional Directional, 5-Way, 3-Position with Brake Release Port

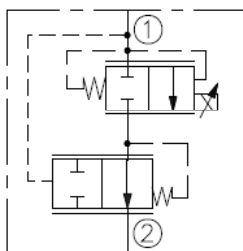
Flow	Model	Cat. Pg.
15 lpm/4 gpm	SP08-58D	2.145.1
23 lpm/6 gpm	SP10-58D	2.146.1



Proportional Flow Control, Restrictive, Normally Closed

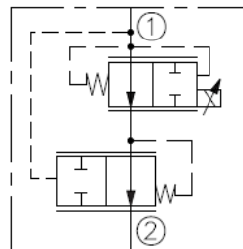
Flow	Model	Cat. Pg.
64 lpm/17 gpm	PV72-20	2.330.1
68 lpm/18 gpm	*HPV12-20	2.332.1

*Rated for 345 bar/5000 psi



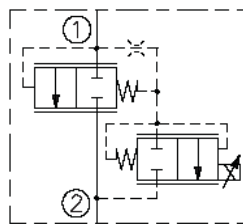
Proportional Flow Control, Restrictive, Normally Open

Flow	Model	Cat. Pg.
56 lpm/15 gpm	PV72-21	2.340.1



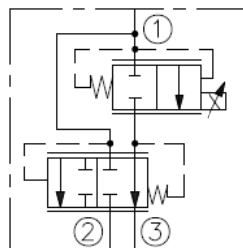
Proportional Flow Control, Normally Closed

Flow	Model	Cat. Pg.
170 lpm/45 gpm	PV16-23	2.348.1



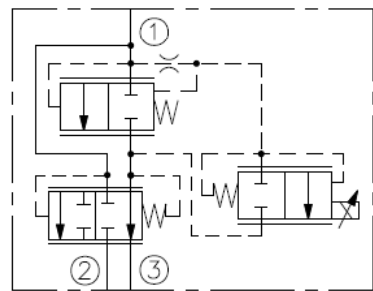
Proportional Flow Control, Bypass, Normally Closed

Flow	Model	Cat. Pg.
22 lpm/6 gpm	PV08-30	2.370.1
30 lpm/8 gpm	PV70-30	2.372.1
64 lpm/17 gpm	PV72-30	2.374.1
151 lpm/40 gpm	PV76-30A	2.376.1



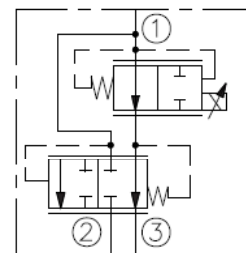
Proportional Flow Control, Bypass, Normally Closed

Flow	Model	Cat. Pg.
170 lpm/45 gpm	PV42-M30	2.378.1



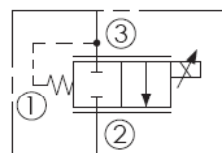
Proportional Flow Control, Bypass, Normally Open

Flow	Model	Cat. Pg.
22 lpm/6 gpm	PV08-31	2.380.1
30 lpm/8 gpm	PV70-31	2.382.1
53 lpm/14 gpm	PV72-31	2.384.1
79 lpm/21 gpm	PV76-31A	2.386.1



Proportional Flow Control, Normally Closed

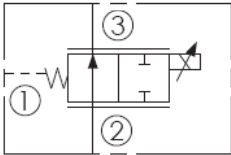
Flow	Model	Cat. Pg.
38 lpm/10 gpm	PV70-33	2.400.1
76 lpm/20 gpm	PV72-33	2.406.1



ELECTRO-PROPORTIONAL VALVES

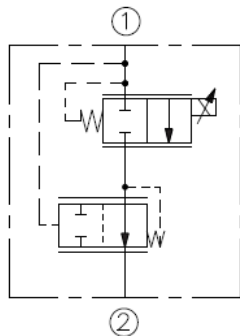
Proportional Flow Control, Normally Open

Flow	Model	Cat. Pg.
38 lpm/10 gpm	PV70-35	2.432.1
87 lpm/23 gpm	PV72-35	2.434.1



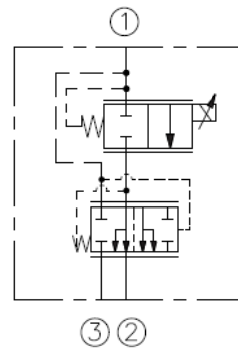
Proportional Flow Regulator, Pressure Compensated, 2-Port, Normally Closed

Flow	Model	Cat. Pg.
30 lpm/8 gpm	PFR70-33E	2.401.1
60 lpm/16 gpm	PFR72-33L	2.408.1



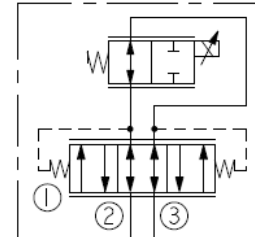
Proportional Flow Regulator, Pressure Compensated, 3-Port, Normally Closed, Priority Bypass

Flow	Model	Cat. Pg.
30 lpm/8 gpm	PFR70-33F	2.402.1
30 lpm/8 gpm	PFR70-33J	2.403.1
60 lpm/16 gpm	PFR72-33J	2.407.1

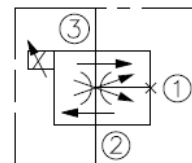


Proportional Flow Control, Bi-Directional, Normally Open

Flow	Model	Cat. Pg.
19 lpm/5 gpm	ZL70-31	2.622.1
50 lpm/13 gpm	ZL72-31	2.624.1

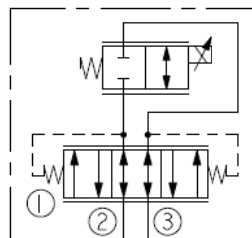


ABBREVIATED SYMBOL:

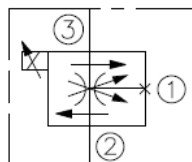


Proportional Flow Control, Bi-Directional, Normally Closed

Flow	Model	Cat. Pg.
19 lpm/5 gpm	ZL70-30	2.602.1
50 lpm/13 gpm	ZL72-30	2.604.1

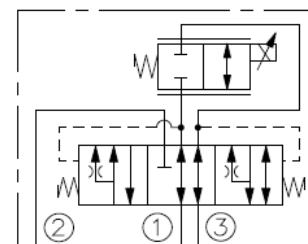


ABBREVIATED SYMBOL:

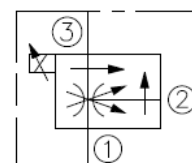


Proportional Flow Control, Bi-Directional, Normally Closed

Flow	Model	Cat. Pg.
19 lpm/5 gpm	ZL70-36	2.662.1
45 lpm/12 gpm	ZL72-36	2.664.1



ABBREVIATED SYMBOL:

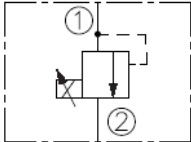


CHECK VALVE (TYPICAL)

ELECTRO-PROPORTIONAL VALVES

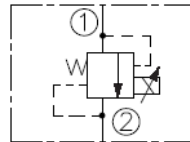
Proportional Pressure Control, Relief, Increasing Pressure with Increasing Current

Flow	Model	Cat. Pg.
3.79 lpm/1 gpm	TS08-20	2.812.1
12 lpm/3.2 gpm	TS38-20	2.813.1
7.57 lpm/2 gpm	TS58-20	2.815.1



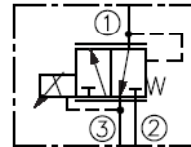
Proportional Pressure Control, Pilot-Operated Relief, Decreasing Pressure with Increasing Current

Flow	Model	Cat. Pg.
19 lpm/5 gpm	TS08-27	2.860.1
76 lpm/20 gpm	TS10-27	2.862.1
189 lpm/50 gpm	TS12-27	2.864.1



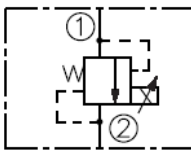
Proportional Pressure Control, Reducing/Relieving, Direct Operate

Flow	Model	Cat. Pg.
4 lpm/1.05 gpm	EHPR08-33	2.970.1



Proportional Pressure Control, Relief, Decreasing Pressure with Increasing Current

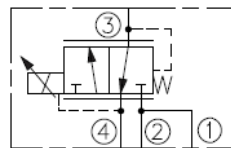
Flow	Model	Cat. Pg.
1.1 lpm/0.3 gpm	TS38-21	2.823.1
1.9 lpm/0.5 gpm	TS58-21F	2.825.1



Proportional Pressure Control, Reducing/Relieving, Internal Pilot Operated

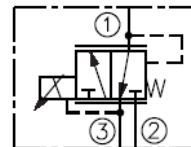
Flow	Model	Cat. Pg.
30 lpm/8 gpm	TS98-30	2.882.1
30 lpm/8 gpm	*TS98-T34	2.950.1
38 lpm/10 gpm	TS90-31	2.884.1

*Drop-In Style



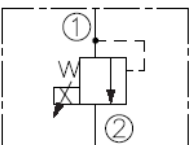
Proportional Pressure Control, Reducing/Relieving, Direct-Operated, Drop-In Style

Flow	Model	Cat. Pg.
3.8 lpm/1 gpm	EHPR98-T33	2.971.1



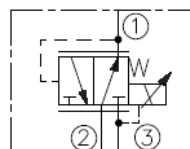
Proportional Pressure Control, Pilot-Operated Relief, Increasing Pressure with Increasing Current

Flow	Model	Cat. Pg.
95 lpm/25 gpm	TS10-26	2.852.1
189 lpm/50 gpm	TS12-26	2.854.1



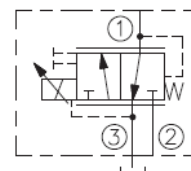
Proportional Pressure Control, Reducing/Relieving, Pilot Operated

Flow	Model	Cat. Pg.
60 lpm/16 gpm	TS10-36	2.900.1
189 lpm/50 gpm	TS12-36	2.901.1



Proportional Pressure Control, Reducing/Relieving, Direct-Operated, Drop-In Style

Flow	Model	Cat. Pg.
5.7 lpm/1.5 gpm	EHPR98-T35	2.972.1
18 lpm/5 gpm	EHPR98-T38	2.973.1

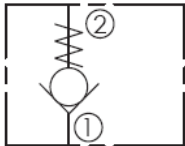


DIRECTIONAL VALVES

Check, Guided

Flow	Model	Cat. Pg.
5 lpm/1.5 gpm	CV04-20	4.005.1
5 lpm/1.5 gpm	CV04-B20	4.005.1
7.6 lpm/2 gpm	*CF06-B20	4.006.1
30 lpm/8 gpm	CV08-20	4.010.1
57 lpm/15 gpm	CV10-20	4.011.1
57 lpm/15 gpm	*CV50-20	4.012.1
95 lpm/25 gpm	CV12-20	4.013.1
151 lpm/40 gpm	CV16-20	4.014.1
378 lpm/100 gpm	CV42-M20	4.016.1
95 lpm/25 gpm	*HCV12-20	4.013.1
151 lpm/40 gpm	*HCV16-20	4.015.3
303 lpm/80 gpm	*HCV42-20	4.017.1

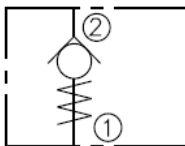
*Rated for 345 bar/5000 psi



Check, Guided, Reverse Flow Direction

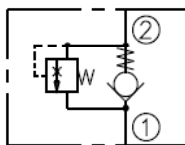
Flow	Model	Cat. Pg.
7.61 lpm/2 gpm	*CV06-21	4.017.7
30 lpm/8 gpm	CV08-21	4.018.1
56 lpm/15 gpm	CV10-21	4.019.1
114 lpm/30 gpm	CV12-21	4.020.1
49 lpm/13 gpm	CV10-23	4.034.1
56 lpm/15 gpm	CV10-24	4.040.1

*Rated for 345 bar/5000 psi



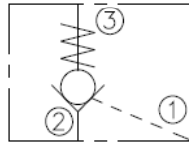
Check, Guided with Thermal Relief

Flow	Model	Cat. Pg.
45 lpm/12 gpm	CV10-28	4.050.1



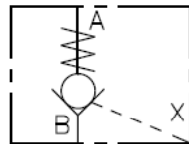
Check, Pilot-to-Open

Flow	Model	Cat. Pg.
18 lpm/5 gpm	PC08-30	4.100.1
22 lpm/6 gpm	PC10-30	4.101.1
30 lpm/8 gpm	PC10-32	4.109.1



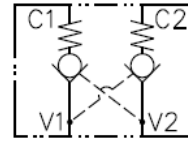
Check, Pilot-to-Open, In-Line Plumbed Valve

Flow	Model	Cat. Pg.
45 lpm/12 gpm	PCV10	4.151.1
151 lpm/40 gpm	PCV16	4.153.1



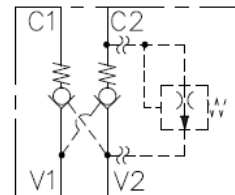
Check, Dual Pilot-to-Open In-Line Plumbed Valve

Flow	Model	Cat. Pg.
22 lpm/6 gpm	DCV08	4.250.1
95 lpm/25 gpm	DCV12	4.252.1



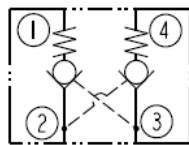
Lock Valve with Thermal Relief Option In-Line Plumbed Valve

Flow	Model	Cat. Pg.
45 lpm/12 gpm	DCV10	4.251.1



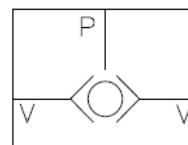
Check, Dual Pilot-to-Open

Flow	Model	Cat. Pg.
18 lpm/5 gpm	DC08-40	4.200.1



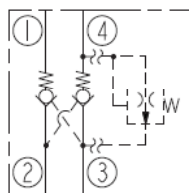
Load Shuttle, Ball-Type In-Line Plumbed Valve

Flow	Model	Cat. Pg.
22 lpm/6 gpm	LSV1	4.260.1



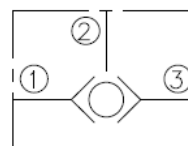
Check, Dual Pilot-Operated

Flow	Model	Cat. Pg.
30 lpm/8 gpm	DC10-40	4.201.1



Load Shuttle, Ball-Type

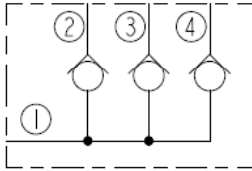
Flow	Model	Cat. Pg.
3.8 lpm/1 gpm	LS04-B30	4.265.1
15 lpm/4 gpm	LS08-30	4.270.1
22 lpm/6 gpm	LS10-30	4.271.1
30 lpm/8 gpm	LS50-30	4.272.1



DIRECTIONAL VALVES

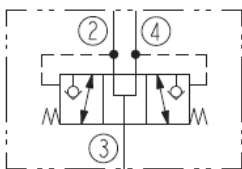
Load Shuttle Network

Flow	Model	Cat. Pg.
1.9 lpm/0.5 gpm	LS10-40	4.280.1



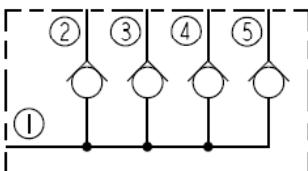
Inverted Shuttle

Flow	Model	Cat. Pg.
15 lpm/4 gpm	LS10-41	4.281.1



Load Shuttle Network

Flow	Model	Cat. Pg.
1.9 lpm/0.5 gpm	LS10-50	4.290.1

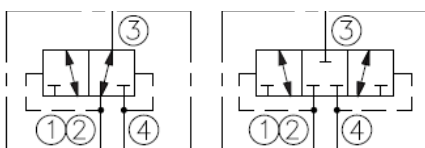


Low Side (Hot Oil) Shuttle, Normally Closed, Springless

Flow	Model	Cat. Pg.
22 lpm/6 gpm	HS10-42	4.300.1
22 lpm/6 gpm	*HS50-42	4.300.1
114 lpm/30 gpm	*HS52-42	4.301.1

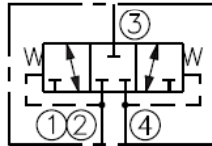
*Rated for 345 bar/5000 psi

TRANSITION:



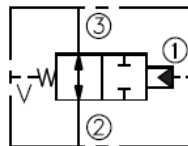
Low Side (Hot Oil) Shuttle, Spring Centered

Flow	Model	Cat. Pg.
45 lpm/12 gpm	HS50-43	4.302.1
132 lpm/35 gpm	HS52-43	4.303.1



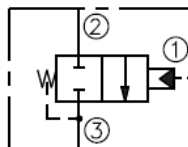
Piloted 2-Way Spool, Normally Open, External Vent

Flow	Model	Cat. Pg.
38 lpm/10 gpm	PD10-30	4.310.1
114 lpm/30 gpm	PD12-30	4.312.1



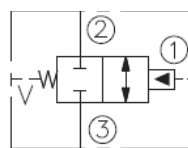
Piloted 2-Way Spool, Normally Closed, Internal Vent

Flow	Model	Cat. Pg.
38 lpm/10 gpm	PD10-32	4.316.1
114 lpm/30 gpm	PD12-32	4.317.1



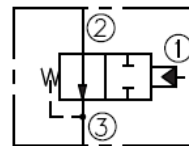
Piloted 2-Way Spool, Normally Closed, External Vent

Flow	Model	Cat. Pg.
38 lpm/10 gpm	PD10-34	4.328.1
114 lpm/30 gpm	PD12-34	4.329.1



Piloted 2-Way Spool, Normally Open, Internal Vent

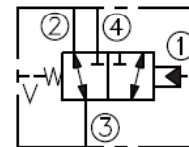
Flow	Model	Cat. Pg.
38 lpm/10 gpm	PD10-35	4.333.1
114 lpm/30 gpm	PD12-35	4.334.1



Piloted 3-Way Spool, External Vent

Flow	Model	Cat. Pg.
30 lpm/8 gpm	PD10-40	4.340.1
114 lpm/30 gpm	PD12-40	4.341.1
170 lpm/45 gpm	PD16-40	4.342.1
265 lpm/70 gpm	*PD42-M40	4.343.1

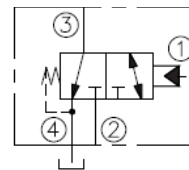
*Rated for 345 bar/5000 psi



Piloted 3-Way Spool, Internal Vent

Flow	Model	Cat. Pg.
30 lpm/8 gpm	PD10-41	4.345.1
114 lpm/30 gpm	PD12-41	4.346.1
170 lpm/45 gpm	PD16-41	4.347.1
265 lpm/70 gpm	*PD42-M41	4.348.1

*Rated for 345 bar/5000 psi

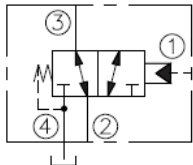


DIRECTIONAL VALVES

Piloted 3-Way Spool, Internal Vent

Flow	Model	Cat. Pg.
38 lpm/10 gpm	PD10-42	4.350.1
114 lpm/30 gpm	PD12-42	4.351.1
170 lpm/45 gpm	PD16-42	4.352.1
265 lpm/70 gpm	*PD42-M42	4.353.1

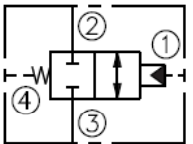
*Rated for 345 bar/5000 psi



Piloted 2-Way Spool, Ported Vent

Flow	Model	Cat. Pg.
30 lpm/8 gpm	PD10-44	4.355.1
114 lpm/30 gpm	PD12-44	4.356.1
170 lpm/45 gpm	PD16-44	4.357.1
265 lpm/70 gpm	*HPD42-M44	4.358.1

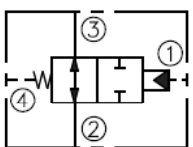
*Rated for 345 bar/5000 psi



Piloted 2-Way Spool, Ported Vent

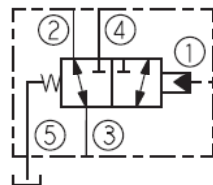
Flow	Model	Cat. Pg.
30 lpm/8 gpm	PD10-45	4.360.1
114 lpm/30 gpm	PD12-45	4.361.1
170 lpm/45 gpm	PD16-45	4.362.1
265 lpm/70 gpm	*PD42-M45	4.363.1
265 lpm/70 gpm	*HPD42-M45	4.364.1

*Rated for 345 bar/5000 psi



Piloted 3-Way Spool, Ported Vent

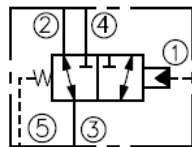
Flow	Model	Cat. Pg.
38 lpm/10 gpm	PD10-50	4.370.1



Piloted 3-Way Spool, Ported Vent

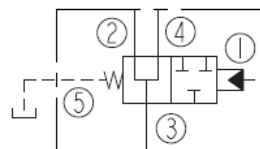
Flow	Model	Cat. Pg.
95 lpm/25 gpm	PD12-S50	4.371.1
170 lpm/45 gpm	PD16-S50	4.372.1
151 lpm/45 gpm	*HPD16-S50	4.372.3
265 lpm/70 gpm	*PD42-S50	4.373.1

*Rated for 345 bar/5000 psi



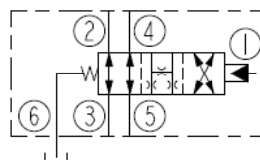
Piloted 3-Way Spool, Ported Vent

Flow	Model	Cat. Pg.
45 lpm/12 gpm	PD10-51	4.383.1
150 lpm/40 gpm	PD16-S51	4.383.1



Piloted, 4-Way, 2-Position with Vented Spring

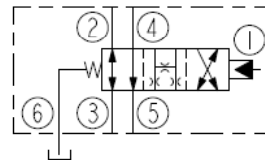
Flow	Model	Cat. Pg.
56 lpm/15 gpm	*PD12-S60N	4.386.1



*Rated for 345 bar/5000 psi

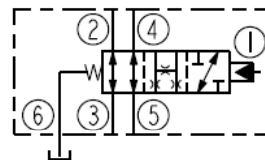
Piloted, 4-Way with Vented Spring

Flow	Model	Cat. Pg.
95 lpm/25 gpm	PD16-S60N	4.388.1
189 lpm/50 gpm	PD42-S60N	4.390.1



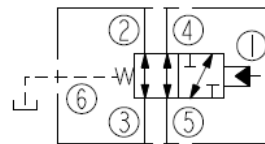
Piloted, 4-Way, 2-Position with Vented Spring

Flow	Model	Cat. Pg.
56 lpm/15 gpm	PD12-S61N	4.392.1



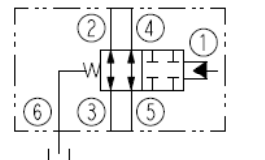
Piloted 4-Way Spool with Vented Spring

Flow	Model	Cat. Pg.
150 lpm/40 gpm	PD16-S61N	4.393.1



Piloted, 4-Way, Spool with Vented Spring

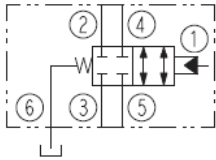
Flow	Model	Cat. Pg.
53 lpm/14 gpm	PD10-S62	4.394.1



DIRECTIONAL VALVES

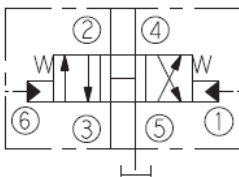
Piloted, 4-Way, Spool, Blocking

Flow	Model	Cat. Pg.
151 lpm/50 gpm	PD16-S63	4.396.1



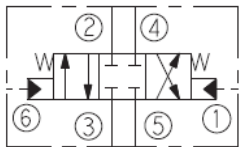
Piloted, 4-Way, Spool

Flow	Model	Cat. Pg.
189 lpm/50 gpm	PD42-S67B	4.397.1



Piloted, 4-Way, Spool

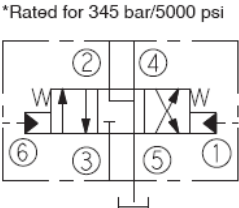
Flow	Model	Cat. Pg.
95 lpm/25 gpm	PD16-S67C	4.398.1
189 lpm/50 gpm	*HPD42-S67C	4.398.5



*Rated for 345 bar/5000 psi

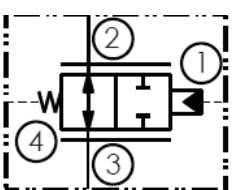
Piloted, 4-Way, Spool

Flow	Model	Cat. Pg.
95 lpm/25 gpm	PD16-S67D	4.399.1
189 lpm/50 gpm	*HPD42-67D	4.400.1



Proportional, Piloted, Spool

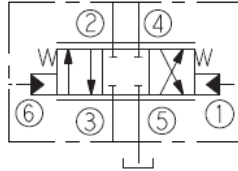
Flow	Model	Cat. Pg.
170 lpm/45 gpm	*HPE42-M45	4.412.1



*Rated for 345 bar/5000 psi

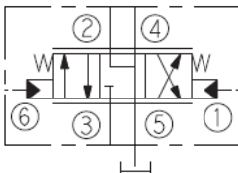
Proportional, Pilot Operated

Flow	Model	Cat. Pg.
45 lpm/12 gpm	PE12-S67C	4.416.1
90 lpm/24 gpm	PE16-S67C	4.418.1
150 lpm/40 gpm	PE42-S67C	4.420.1



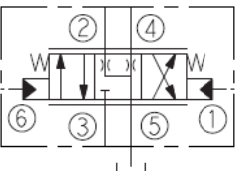
Proportional, Pilot Operated Meter-In and Meter-Out

Flow	Model	Cat. Pg.
45 lpm/12 gpm	PE12-S67D	4.422.1
90 lpm/24 gpm	PE16-S67D	4.424.1
170 lpm/45 gpm	PE42-S67D	4.426.1



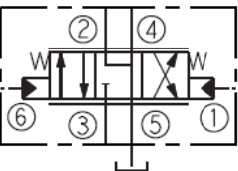
Proportional, Pilot Operated

Flow	Model	Cat. Pg.
45 lpm/12 gpm	PE12-S67H	4.428.1
90 lpm/24 gpm	PE16-S67H	4.430.1
150 lpm/40 gpm	PE42-S67H	4.432.1



Proportional, Pilot Operated Meter-In Only

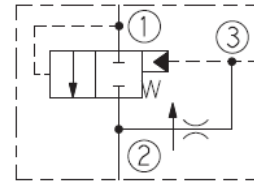
Flow	Model	Cat. Pg.
45 lpm/12 gpm	PE12-S67K	4.436.1
90 lpm/24 gpm	PE16-S67K	4.438.1
170 lpm/45 gpm	PE42-S67K	4.440.1



Pressure-Compensating Element

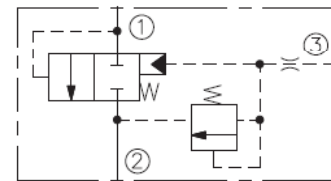
Flow	Model	Cat. Pg.
38 lpm/10 gpm	*EPFR58-35	4.460.1
76 lpm/20 gpm	*EPFR50-S35	4.462.1
151 lpm/40 gpm	*EPFR52-S35	4.464.1
189 lpm/50 gpm	EPFR16-S35	4.466.1
303 lpm/80 gpm	EPFR20-S35	4.468.1

*Rated for 345 bar/5000 psi



Piloted Logic Element with Built-in Pressure Relief

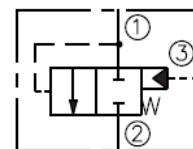
Flow	Model	Cat. Pg.
189 lpm/50 gpm	ECR16-S35	4.480.1



Piloted Spool-Type Logic Element

Flow	Model	Cat. Pg.
38 lpm/10 gpm	*EP08-35	4.490.1
76 lpm/20 gpm	*EP10-S35	4.500.1
113 lpm/30 gpm	*EP12-S35	4.501.1
189 lpm/50 gpm	EP16-S35	4.502.1
379 lpm/100 gpm	*EP20-S35	4.503.1
190 lpm/50 gpm	*HEP16-S35	4.502.3
379 lpm/100 gpm	*HEP42-S35	4.505.1

*Rated for 345 bar/5000 psi

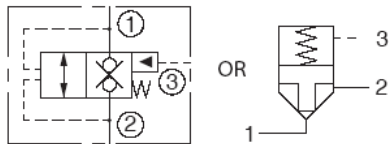


DIRECTIONAL VALVES

Piloted Poppet-Type Logic Element

Flow	Model	Cat. Pg.
113 lpm/30 gpm	*EP10-S38	4.510.1
302 lpm/80 gpm	EP20-S38	4.513.1
284 lpm/75 gpm	*HEP42-S38	4.514.1

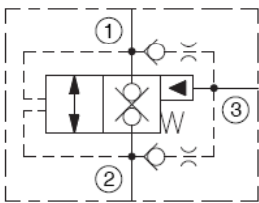
*Rated for 345 bar/5000 psi



Vented, Poppet, Logic Element with Two Built-in Checks

Flow	Model	Cat. Pg.
285 lpm/75 gpm	EP20-S39	4.515.1
284 lpm/75 gpm	*HEP42-S39	4.517.1

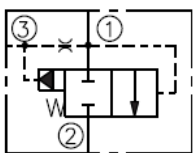
*Rated for 345 bar/5000 psi



Vented Spool-Type Logic Element

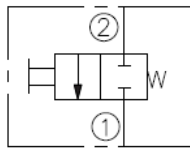
Flow	Model	Cat. Pg.
76 lpm/20 gpm	*EV10-S34	4.520.1
113 lpm/30 gpm	*EV12-S34	4.521.1
189 lpm/50 gpm	EV16-S34	4.522.1
379 lpm/100 gpm	*EV20-S34	4.523.1
37.9 lpm/10 gpm	*EV58-34	4.519.1
190 lpm/50 gpm	*HEV15-S34	4.522.3
379 lpm/100 gpm	*HEV42-S34	4.525.1

*Rated for 345 bar/5000 psi



Manual, Release, Push-to-Open

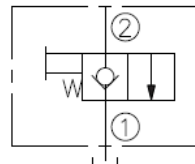
Flow	Model	Cat. Pg.
38 lpm/10 gpm	MV08-22	4.600.1



MV08-22 replaces the MV08-20. Consult factory.

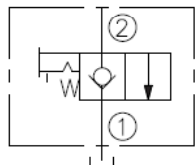
Manual, Spring Return, Pull-to-Open, 2-Way Normally Closed with Lock Position Option (10 size)

Flow	Model	Cat. Pg.
53 lpm/14 gpm	MP08-20	4.610.1
57 lpm/15 gpm	MP10-20	4.611.1



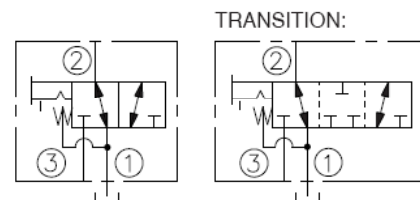
Manual, Spring Return, Pull-to-Open, 2-Way Normally Closed with Lock Position Option

Flow	Model	Cat. Pg.
57 lpm/15 gpm	MP10-22	4.615.1



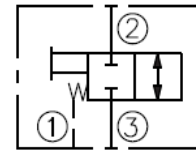
Manual, Spring Return, Pull-to-Shift, 3-Way with Lock Position Option

Flow	Model	Cat. Pg.
19 lpm/5 gpm	MP08-30	4.620.1
23 lpm/6 gpm	MP58-30	4.621.1



Manual, Spring Return, Pull-to-Shift

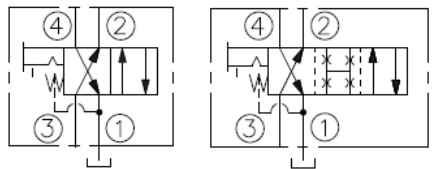
Flow	Model	Cat. Pg.
26.5 lpm/7 gpm	MP08-34	4.625.1



Manual, Spring Return, Pull-to-Shift, 4-Way with Lock Position Option

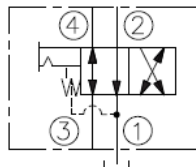
Flow	Model	Cat. Pg.
11 lpm/3 gpm	MP08-40	4.630.1
22 lpm/6 gpm	MP10-40	4.631.1

TRANSITION:



Manual, Spring Return, Push-to-Shift

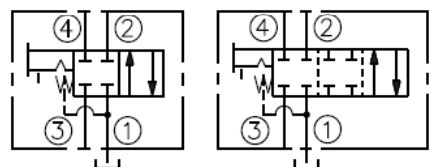
Flow	Model	Cat. Pg.
37 lpm/10 gpm	MD10-40	4.640.1



Manual, Spring Return, Pull-to-Shift, 4-Way with Lock Position Option

Flow	Model	Cat. Pg.
11 lpm/3 gpm	MP08-41	4.645.1
22 lpm/6 gpm	MP10-41	4.646.1

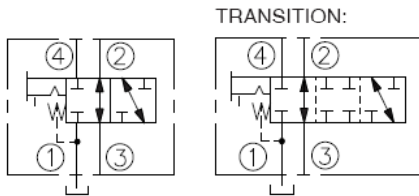
TRANSITION:



DIRECTIONAL VALVES

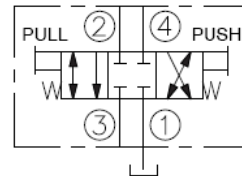
Manual, Spring Return, Pull-to-Shift, 4-Way with Lock Position Option

Flow	Model	Cat. Pg.
33 lpm/9 gpm	MP10-42	4.652.1



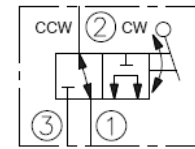
Manual, Pull/Push-to-Shift, 3-Position, 4-Way, Closed Center

Flow	Model	Cat. Pg.
19 lpm/5 gpm	MP10-47C	4.722.1

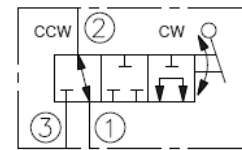


Manual Rotary, 3-Way, 2-Position

Flow	Model	Cat. Pg.
26.5 lpm/7 gpm	MR10-31	4.774.1

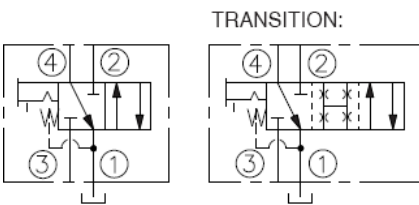


TRANSITION:



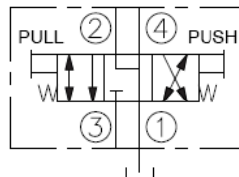
Manual, Spring Return, Pull-to-Shift, 4-Way with Lock Position Option

Flow	Model	Cat. Pg.
22 lpm/6 gpm	MP10-43	4.658.1



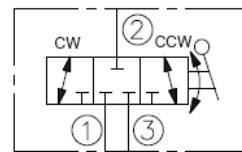
Manual, Pull/Push-to-Shift, 3-Position, 4-Way, "Motor Spool"

Flow	Model	Cat. Pg.
19 lpm/5 gpm	MP10-47D	4.732.1



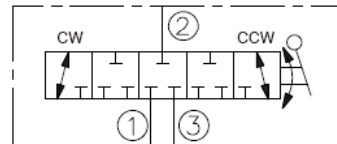
Manual Rotary, 3-Way, 3-Position

Flow	Model	Cat. Pg.
19 lpm/5 gpm	MR10-37A	4.782.1



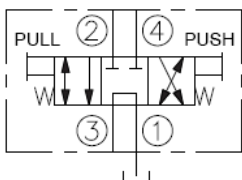
Note:
Spring Center
Optional.

TRANSITION:



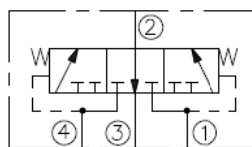
Manual, Pull/Push-to-Shift, 3-Position, 4-Way, Tandem Center

Flow	Model	Cat. Pg.
11 lpm/3 gpm	MP10-47A	4.702.1



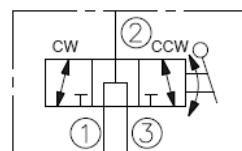
Brake Release Valve

Flow	Model	Cat. Pg.
7.5 lpm/2 gpm	BV10-40	4.750.1



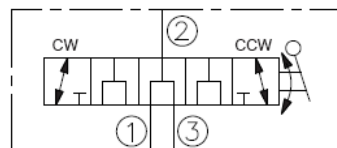
Manual Rotary, 3-Way, 3-Position

Flow	Model	Cat. Pg.
26.5 lpm/7 gpm	MR10-37B	4.792.1



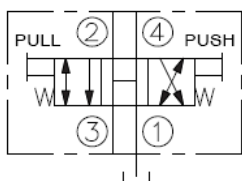
Note:
Spring Center
Optional.

TRANSITION:



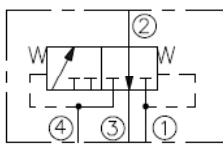
Manual, Pull/Push-to-Shift, 3-Position, 4-Way, Open Center

Flow	Model	Cat. Pg.
11 lpm/3 gpm	MP10-47B	4.712.1



Brake Release Valve

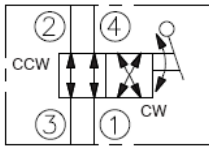
Flow	Model	Cat. Pg.
7.5 lpm/2 gpm	BV10-42	4.758.1



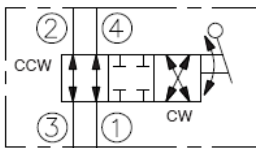
DIRECTIONAL VALVES

Manual Rotary, 4-Way, 2-Position

Flow	Model	Cat. Pg.
11.4 lpm/3 gpm	MR10-40	4.802.1

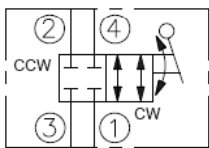


TRANSITION:

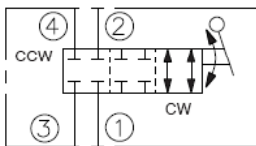


Manual Rotary, 4-Way, 2-Position

Flow	Model	Cat. Pg.
11.4 lpm/3 gpm	MR10-41	4.812.1

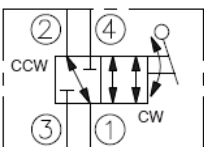


TRANSITION:

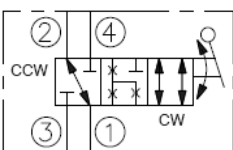


Manual Rotary, 4-Way, 2-Position

Flow	Model	Cat. Pg.
11.4 lpm/3 gpm	MR10-43	4.832.1

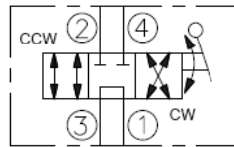


TRANSITION:



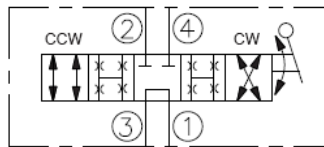
Manual Rotary, 4-Way, 3-Position Tandem Center

Flow	Model	Cat. Pg.
11.4 lpm/3 gpm	MR10-47A	4.902.1



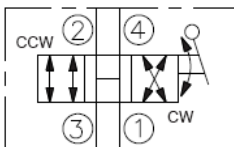
Note:
Spring Center
Optional.

TRANSITION:



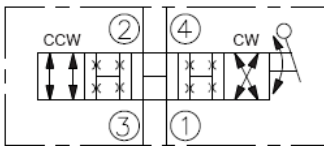
Manual Rotary, 4-Way, 3-Position Open Center

Flow	Model	Cat. Pg.
11.4 lpm/3 gpm	MR10-47B	4.912.1



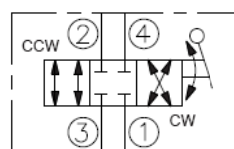
Note:
Spring Center
Optional.

TRANSITION:



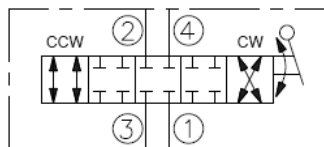
Manual Rotary, 4-Way, 3-Position Closed Center

Flow	Model	Cat. Pg.
11.4 lpm/3 gpm	MR10-47C	4.922.1



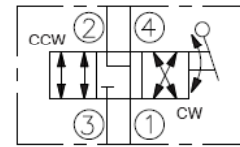
Note:
Spring Center
Optional.

TRANSITION:



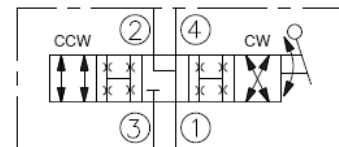
Manual Rotary, 4-Way, 3-Position "Motor Spool"

Flow	Model	Cat. Pg.
11.4 lpm/3 gpm	MR10-47D	4.932.1



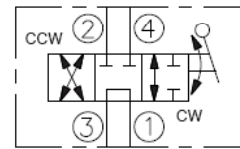
Note:
Spring Center
Optional.

TRANSITION:



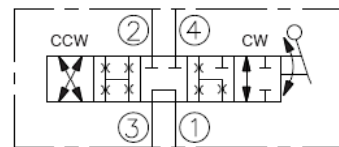
Manual Rotary, 4-Way, 3-Position

Flow	Model	Cat. Pg.
11.4 lpm/3 gpm	MR10-47F	4.942.1



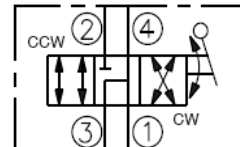
Note:
Spring Center
Optional.

TRANSITION:



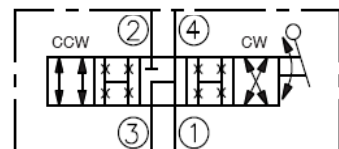
Manual Rotary, 4-Way, 3-Position

Flow	Model	Cat. Pg.
11.4 lpm/3 gpm	MR10-47G	4.952.1



Note:
Spring Center
Optional.

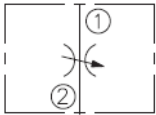
TRANSITION:



FLOW CONTROL VALVES

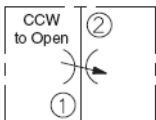
Needle Valves

Flow	Model	Cat. Pg.
38 lpm/10 gpm	NV08-20	5.010.1
38 lpm/10 gpm	NV08-23	5.050.1
56 lpm/15 gpm	NV10-20	5.012.1
56 lpm/15 gpm	NV10-22	5.042.1
129 lpm/34 gpm	NV12-20	5.014.1



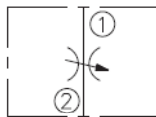
Rotary Flow Control

Flow	Model	Cat. Pg.
53 lpm/14 gpm	MR10-20	5.013.1



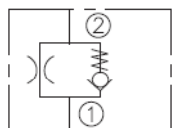
Needle Valves, Fine Adjustment

Flow	Model	Cat. Pg.
38 lpm/10 gpm	NV08-21	5.030.1
56 lpm/15 gpm	NV10-21	5.032.1



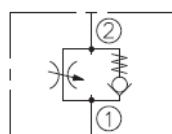
Flow Control, Free Flow 1 to 2

Flow	Model	Cat. Pg.
45 lpm/12 gpm	FC08-20F	5.200.1



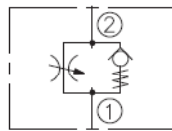
Flow Control, Free Flow 1 to 2

Flow	Model	Cat. Pg.
45 lpm/12 gpm	FC10-20	5.201.1
129 lpm/34 gpm	FC12-20	5.202.1



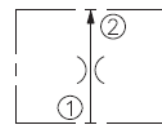
Flow Control, Free Flow 2 to 1

Flow	Model	Cat. Pg.
56 lpm/15 gpm	FC10-21	5.212.1



Flow Regulator Pressure Compensated, Fixed Setting

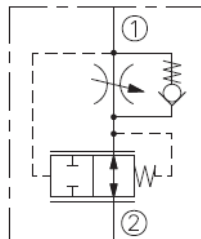
Flow	Model	Cat. Pg.
7.5 lpm/2 gpm	FR08-20F	5.300.1
22.7 lpm/6 gpm	FR10-20F	5.302.1
22.7 lpm/6 gpm	*FR50-20F	5.304.1
56 lpm/15 gpm	FR12-20F	5.306.1
113 lpm/30 gpm	FR16-20F	5.308.1



*Rated for 345 bar/5000 psi

Flow Regulators, Restrictive, Adjustable, Pressure Compensated

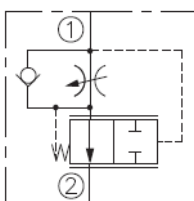
Flow	Model	Cat. Pg.
11.5 lpm/3 gpm	*FR50-23	5.314.1
34 lpm/9 gpm	*FR50-28	5.320.1



*Rated for 345 bar/5000 psi

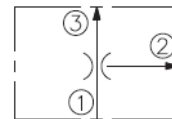
Flow Regulator, Restrictive, Adjustable Orifice

Flow	Model	Cat. Pg.
76 lpm/20 gpm	FR12-23	5.316.1



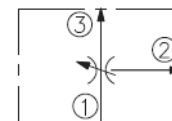
Flow Regulator, Pressure Compensated, Priority Bypass Fixed Setting

Flow	Model	Cat. Pg.
7.6 lpm/2 gpm	FR08-30F	5.340.1
37 lpm/10 gpm	FR10-30F	5.343.1
94 lpm/25 gpm	FR12-30F	5.345.1
190 lpm/50 gpm	FR16-30F	5.346.1



Flow Regulator, Pressure Compensated, Priority Bypass, Limited Range Adjustable

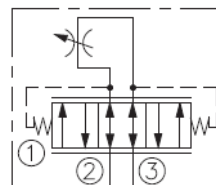
Flow	Model	Cat. Pg.
22 lpm/6 gpm	FR10-30A	5.342.1



Flow Regulator, Pressure Compensated, Adjustable, Bi-Directional

Flow	Model	Cat. Pg.
19 lpm/5 gpm	FR10-32	5.362.1
50 lpm/13 gpm	FR12-32	5.365.1

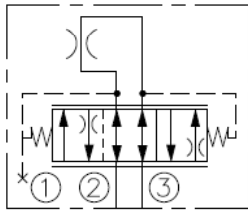
USASI/ISO:



FLOW CONTROL VALVES

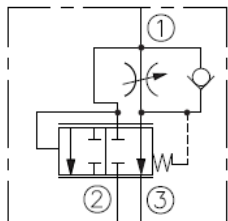
Flow Regulator, Fixed Orifice, Bi-Directional

Flow	Model	Cat. Pg.
19 lpm/5 gpm	FR10-32F	5.363.1

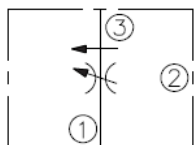


Bypass Flow Control, Adjustable Orifice

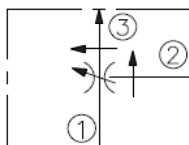
Flow	Model	Cat. Pg.
13 lpm/3 gpm	FR10-33	5.372.1
38 lpm/10 gpm	FR10-39	5.382.1
68 lpm/18 gpm	FR12-33	5.374.1



2-PORTED:

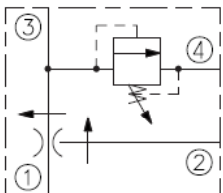


3-PORTED:



Flow Regulator Priority-Type with Pressure Relief

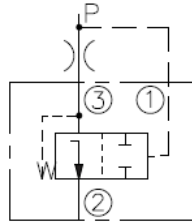
Flow	Model	Cat. Pg.
38 lpm/10 gpm	FRRV10-41F	5.390.1
76 lpm/20 gpm	FRRV12-41F	5.392.1



Pressure Compensator, Spool Element

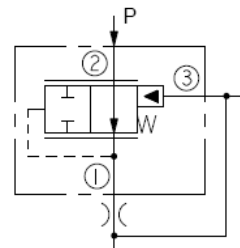
Flow	Model	Cat. Pg.
30 lpm/8 gpm	EC10-30	5.402.1
30 lpm/8 gpm	*EC50-30	5.406.1
56 lpm/15 gpm	EC12-30	5.410.1

*Rated for 345 bar/5000 psi



Pressure Compensator

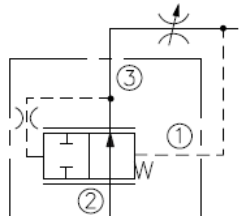
Flow	Model	Cat. Pg.
30 lpm/8 gpm	EC10-S31	5.414.1



Pressure Compensator

Flow	Model	Cat. Pg.
30 lpm/8 gpm	EC08-32	5.418.1
38 lpm/10 gpm	EC10-32	5.422.1
94 lpm/25 gpm	EC12-32	5.426.1
152 lpm/40 gpm	EC16-32	5.430.1
83 lpm/22 gpm	*HEC12-32	5.427.1

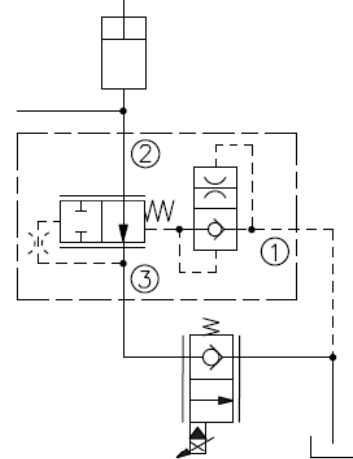
*Rated for 345 bar/5000 psi



Pressure Compensator, with Damping and Load Holding

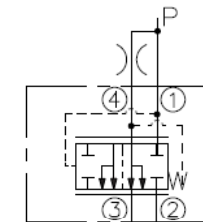
Flow	Model	Cat. Pg.
83 lpm/22 gpm	EC12-34	5.434.1
170 lpm/45 gpm	EC16-34	5.438.1
83 lpm/22 gpm	*HEC12-34	5.435.1

*Rated for 345 bar/5000 psi



Pressure Compensator, Priority Bypass Spool Element Constant Differential

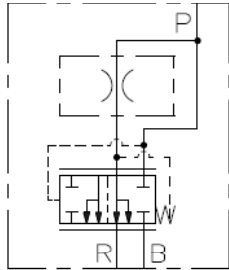
Flow	Model	Cat. Pg.
38 lpm/10 gpm	EC10-40	5.422.1
80 lpm/21 gpm	EC12-40	5.450.1
151 lpm/40 gpm	EC42-M40	5.458.1



FLOW CONTROL VALVES

Pressure Compensator, Priority Bypass Spool Element Line Plumbed Body

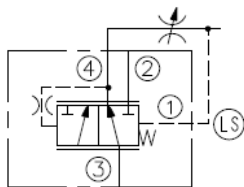
Flow	Model	Cat. Pg.
38 lpm/10 gpm	ECV10-44	5.522.1



Pressure Compensator, Load Sensing, Priority-Type

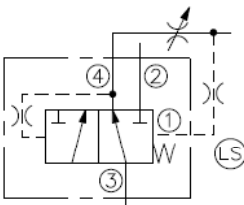
Flow	Model	Cat. Pg.
38 lpm/10 gpm	EC10-42	5.462.1
38 lpm/10 gpm	*EC50-42	5.466.1
95 lpm/25 gpm	EC12-42	5.470.1
190 lpm/50 gpm	EC16-42	5.474.1
95 lpm/25 gpm	*HEC12-42	5.471.1

*Rated for 345 bar/5000 psi



Pressure Compensator with Static Load Sense, Priority-On-Demand

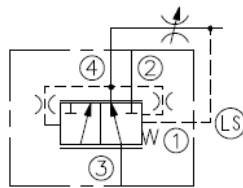
Flow	Model	Cat. Pg.
208 lpm/55 gpm	EC42-M42	5.478.1



Pressure Compensator with Dynamic Load Sense

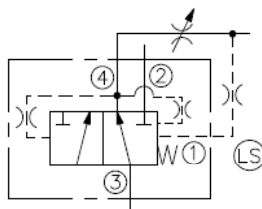
Flow	Model	Cat. Pg.
26 lpm/7 gpm	EC10-43	5.482.1
95 lpm/25 gpm	EC12-43	5.490.1
190 lpm/50 gpm	EC16-43	5.494.1
38 lpm/10 gpm	*EC50-43	5.486.1
95 lpm/25 gpm	*HEC12-43	5.491.1
530 lpm/140 gpm	*HEC32-43	5.502.1

*Rated for 345 bar/5000 psi



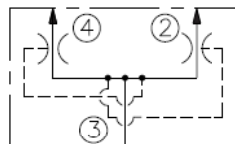
Pressure Compensator with Dynamic Load Sense, Priority-On-Demand

Flow	Model	Cat. Pg.
303 lpm/80 gpm	EC42-M43	5.498.1



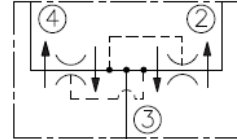
Flow Divider/Combiner

Flow	Model	Cat. Pg.
45 lpm/12 gpm	FD10-40	5.602.1
90 lpm/24 gpm	FD12-40	5.603.1
150 lpm/40 gpm	FD16-40	5.604.1



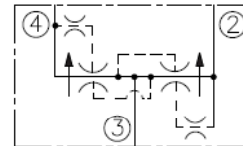
Flow Divider/Combiner Cylinder Synchronizing

Flow	Model	Cat. Pg.
45 lpm/12 gpm	FD10-41	5.612.1
90 lpm/24 gpm	FD12-41	5.613.1



Flow Divider/Combiner with Anti-Stall Feature

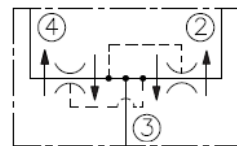
Flow	Model	Cat. Pg.
60 lpm/16 gpm	FD10-42	5.622.1
151 lpm/40 gpm	FD16-42	5.626.1



Flow Divider/Combiner, Heavy Duty, Multi-Function

Flow	Model	Cat. Pg.
38 lpm/10 gpm	*FD50-44	5.630.1
45 lpm/12 gpm	*FD50-45	5.632.1
90 lpm/24 gpm	*FD52-45	5.634.1
197 lpm/52 gpm	*FD56-45	5.636.1

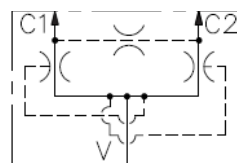
*Rated for 345 bar/5000 psi



Flow Divider/Combiner with Balance Orifice

Flow	Model	Cat. Pg.
197 lpm/52 gpm	FDC16	5.706.1

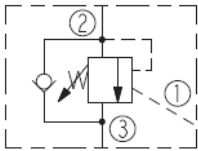
Rated for 345 bar/5000 psi with ductile iron body.



PRESSURE CONTROL VALVES

Motion Control Valve

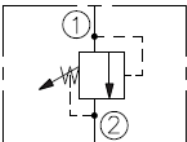
Flow	Model	Cat. Pg.
19 lpm/5 gpm	CB10-30	6.005.1



Relief, Direct-Acting Poppet

Flow	Model	Cat. Pg.
22 lpm/6 gpm	RV08-20	6.010.1
1.89 lpm/.05 gpm	RV08-29	6.176.1
38 lpm/10 gpm	RV10-20	6.020.1
114 lpm/30 gpm	*RV50-20	6.023.1
22 lpm/6 gpm	*RV58-20	6.015.1

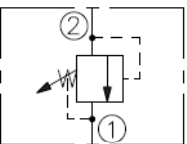
*Rated for 345 bar/5000 psi



Relief, Differential Area Poppet

Flow	Model	Cat. Pg.
30 lpm/8 gpm	RV08-22	6.045.1
114 lpm/30 gpm	RV10-22	6.050.1
75 lpm/20 gpm	*RV50-22	6.055.1

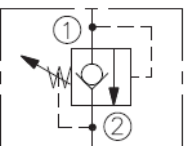
*Rated for 345 bar/5000 psi



Relief, Direct-Acting Poppet With Anti-Cavitation Check

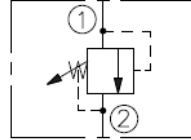
Flow	Model	Cat. Pg.
37.9 lpm/10 gpm	RVCV10-22	6.051.1
115 lpm/30 gpm	*RVCV56-20	6.022.1

*Rated for 345 bar/5000 psi



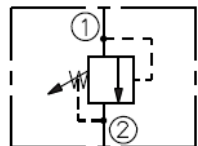
Relief, Pilot-Operated Poppet

Flow	Model	Cat. Pg.
113 lpm/30 gpm	RV10-23	6.060.1



Relief, Pilot-Operated Spool

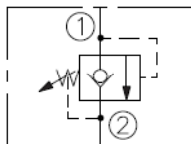
Flow	Model	Cat. Pg.
113 lpm/30 gpm	RV10-26	6.150.1
113 lpm/30 gpm	*RV50-26	6.152.1
150 lpm/40 gpm	RV12-26	6.156.1
150 lpm/40 gpm	*RV52-26	6.157.1
303 lpm/80 gpm	RV16-26	6.160.1
379 lpm/100 gpm	*RV56-26	6.162.1



*Rated for 345 bar/5000 psi, or higher

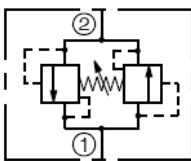
Relief, Pilot-Operated Poppet

Flow	Model	Cat. Pg.
113 lpm/30 gpm	RV10-28	6.170.1



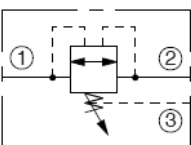
Relief, Bi-Directional

Flow	Model	Cat. Pg.
60 lpm/16 gpm	CR10-28	6.210.1



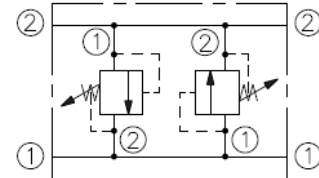
Relief, Bi-Directional

Flow	Model	Cat. Pg.
30 lpm/8 gpm	CR08-38	6.230.1



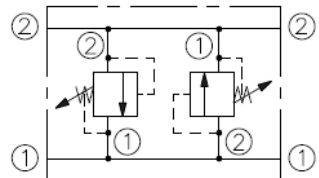
Cross-Over Relief, Direct-Acting Poppet

Flow	Model	Cat. Pg.
22 lpm/6 gpm	CRV08-20	6.250.1
38 lpm/10 gpm	CRV10-20	6.260.1



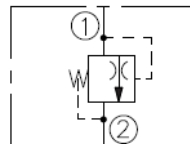
Cross-Over Relief, Differential Area Poppet

Flow	Model	Cat. Pg.
30 lpm/8 gpm	CRV08-22	6.270.1
113 lpm/30 gpm	CRV10-22	6.280.1



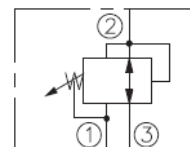
Thermal Relief

Flow	Model	Cat. Pg.
—	TR04-B20	6.300.1



Pressure Reducing/Relieving

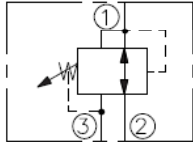
Flow	Model	Cat. Pg.
11 lpm/3 gpm	*PRES50-30	6.404.1



PRESSURE CONTROL VALVES

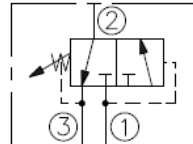
Pressure Reducing/Relieving

Flow	Model	Cat. Pg.
11 lpm/3 gpm	PR08-32	6.410.1
30 lpm/8 gpm	PR10-32	6.420.1



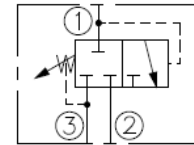
Sequence, Internal Pilot & Vent

Flow	Model	Cat. Pg.
22 lpm/6 gpm	PS08-30	6.500.1
34 lpm/9 gpm	PS10-30	6.510.1
22 lpm/6 gpm	PS10-31	6.520.1



Sequence, Pilot-Operated, Internal Pilot, External Drain

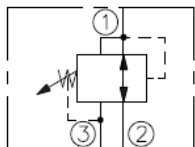
Flow	Model	Cat. Pg.
57 lpm/15 gpm	PS10-36	6.672.1
57 lpm/15 gpm	*PS50-36	6.674.1



*Rated for 345 bar/5000 psi

Pressure Reducing/Relieving, Pilot-Operated

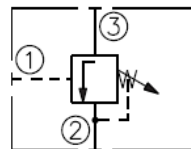
Flow	Model	Cat. Pg.
56 lpm/15 gpm	PR10-36	6.440.1
56 lpm/15 gpm	*PR50-36	6.442.1
189 lpm/50 gpm	PR12-36	6.443.1



*Rated for 345 bar/5000 psi

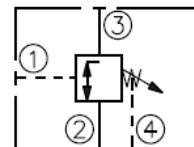
Sequence, External Pilot, Internal Vent

Flow	Model	Cat. Pg.
15 lpm/4 gpm	PS08-32	6.530.1
34 lpm/9 gpm	PS10-32	6.532.1
22 lpm/6 gpm	PS10-33	6.540.1



Sequence, Normally Closed, External Pilot & Drain

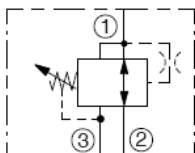
Flow	Model	Cat. Pg.
22 lpm/6 gpm	PS10-40	6.772.1
22 lpm/6 gpm	*PS50-40	6.774.1



*Rated for 345 bar/5000 psi

Pressure Reducing/Relieving Damped, Direct-Acting

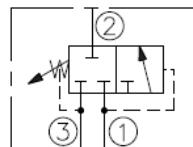
Flow	Model	Cat. Pg.
19 lpm/5 gpm	*PR58-38	6.450.1
72 lpm/19 gpm	*PR50-38	6.454.1



*Rated for 345 bar/5000 psi

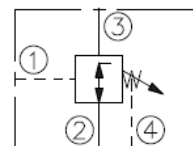
Sequence, Internal Pilot & Vent

Flow	Model	Cat. Pg.
56 lpm/15 gpm	PS10-34	6.552.1



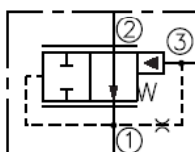
Sequence, Normally Open, External Pilot & Vent

Flow	Model	Cat. Pg.
30 lpm/8 gpm	PS10-41	6.782.1



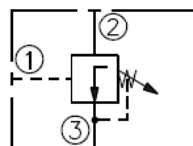
Pressure Reducing Logic Element

Flow	Model	Cat. Pg.
68 lpm/18 gpm	ER10-S30	6.470.1
114 lpm/30 gpm	ER12-S30	6.472.1



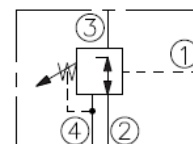
Sequence, External Pilot, Internal Drain

Flow	Model	Cat. Pg.
15 lpm/4 gpm	PS08-35	6.660.1
34 lpm/9 gpm	PS10-35	6.662.1



Sequence, External Pilot

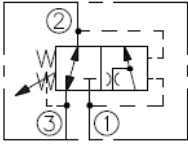
Flow	Model	Cat. Pg.
30 lpm/8 gpm	PS10-43	6.792.1



PRESSURE CONTROLS / HAND PUMPS

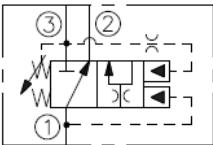
Sequence, Kick-Down

Flow	Model	Cat. Pg.
11 lpm/3 gpm	KS10-30	6.802.1



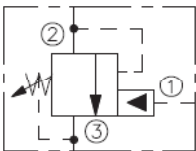
Sequence, Kick-Down, Internal Pilot

Flow	Model	Cat. Pg.
18 lpm/5 gpm	KS10-31	6.812.1



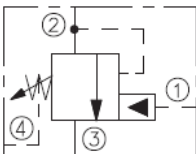
Unloading Pilot, Internal Drain

Flow	Model	Cat. Pg.
3.8 lpm/1 gpm	UP10-31	6.903.1



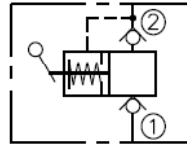
Unloading Pilot, Remote Sequence

Flow	Model	Cat. Pg.
3.8 lpm/1 gpm	UP10-40	6.910.1



Hand Pump, Push and Release

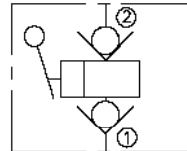
Displacement per Stroke	Model	Cat. Pg.
1.36 cc/0.083 cu. in.	HP10-20	8.550.1



Hand Pump, Push or Pull*

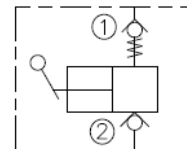
Displacement per Stroke	Model	Cat. Pg.
*Up to 10.6 cc/0.65 cu. in.	HP10-21	8.555.1
21.3 cc/1.3 cu. in.	HP16-21	8.560.1

*Depending on model selected



Hand Pump, Push and Pull

Displacement per Stroke	Model	Cat. Pg.
1.36 cc/0.083 cu. in.	HP10-22	8.570.1



For Complete Contents of
Housings and Accessories Section
see page 8.000.1